

Monitoring the Waldo Canyon Fire

Mary Rupp
Karin Larkin

University of Colorado
Colorado Springs

Monitoring the Waldo Canyon Fire

- The Fire began on June 23rd (Saturday).
- Monitoring the fire response.
 - Wildfire Operations Conference Calls
 - 10am and 4pm daily, 6/25-6/30; 7/6
 - Recovery Conference Calls
 - 3pm daily, 6/25-7/6
 - Press briefings
 - 8am and 4pm daily, 6/27-6/29

6/26/2012 Noon
(from the Library apse)



6/26/2012 4:20 p.m.



6/26/2012 4:30 p.m.



6/26/2012 4:45 p.m.



6/26/2012 4:55 p.m.
(looking north)



6/26/2012 4:55 p.m.
(looking north)



6/26/2012 5:00 p.m.
(from the parking lot)



6/26/2012 5:01 p.m.



6/26/2012 5:05 p.m.



6/26/2012 5:10 p.m.



UCCS and the Community

Beginning June 26th:

- Site of Press Briefings and some emergency operations
 - after evacuation of previous emergency operations center (Coronado High School)
- Housing and resources for evacuees
 - University employees & families (6/26-)
 - Air Force Academy Cadets (6/27-6/29)
 - Respite housing for Fire personnel (6/29-)

What could we do?

At this time UCCS is able to offer temporary storage for cultural and historical collections on campus during the Waldo Canyon fire until materials can be returned to their home institution or more permanent storage if needed. We are not able to provide transportation or assistance in preparing collections for transport.

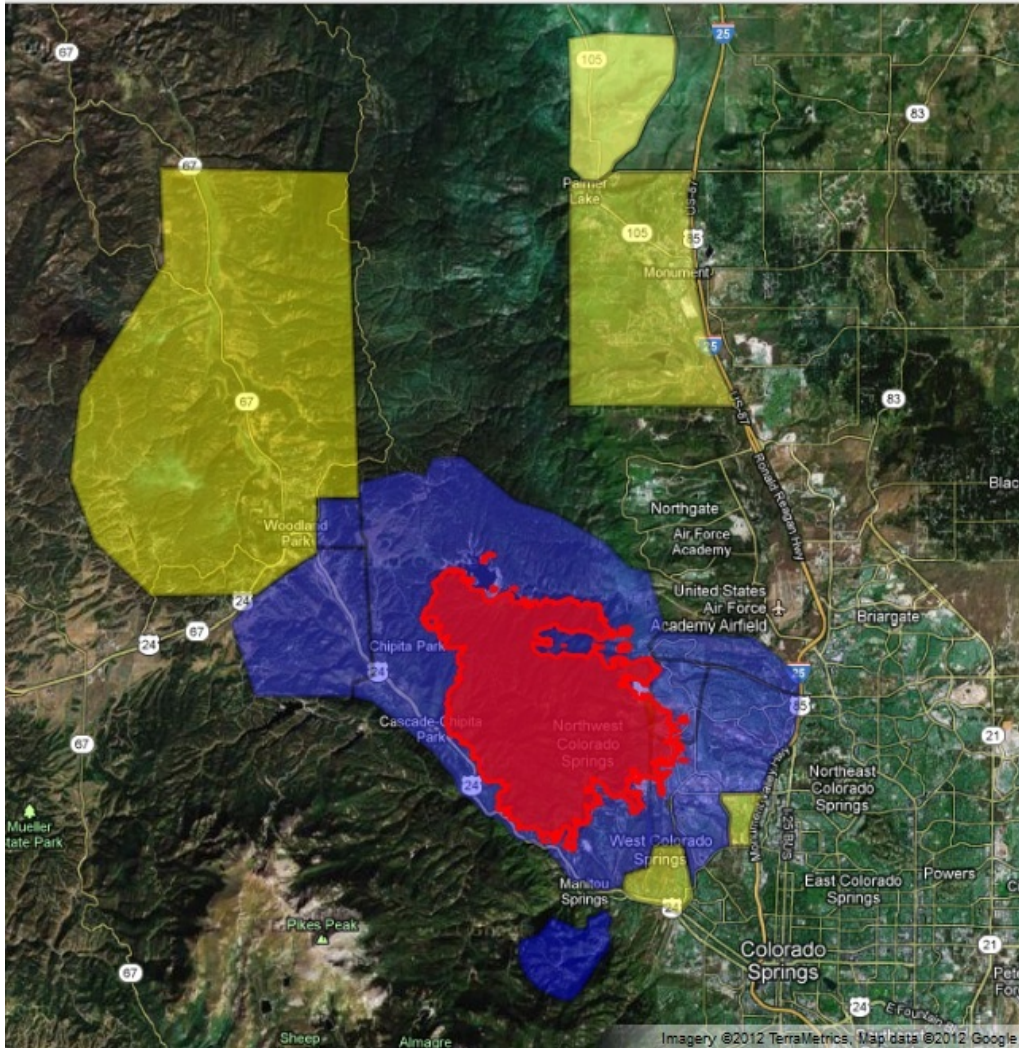
We ask that information about the collections – their extent, contents, condition, their current and/or previous storage conditions, and any special requirements or considerations (eg. NAGPRA).

Two facilities are available:

- The Curation Lab of the Anthropology Department has a temperature and relative humidity controlled storage area (60°F and 40% RH) that can hold up to 850 boxes (bankers boxes, 15"x12"x10") on compactor shelving units.
- The Kraemer Family Library has auxiliary storage – temperature but not environmentally controlled. This storage will hold approximately 60 boxes (bankers boxes, 15"x12"x10") and approximately 250 volumes (there are some options for configuration depending on the size and requirements of the materials).

Fire and Evacuation Zones

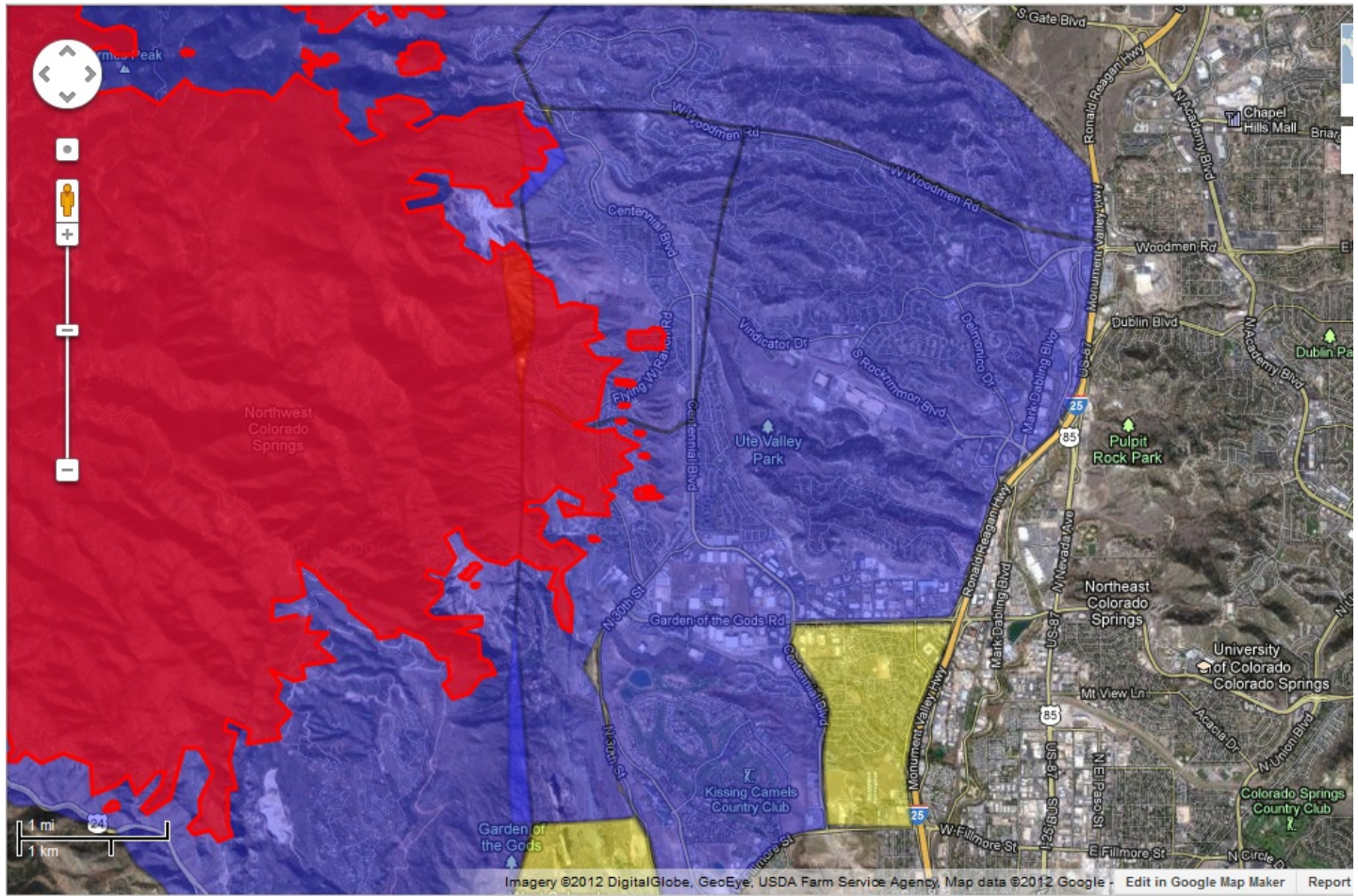
6/27/2012



- Red = Burn Area
- Purple = Mandatory Evacuation
- Yellow = Pre-Evacuation Warning

Fire and Evacuation Zones

6/27/2012



What We Learned

- The situation will change – frequently
- Your staff/coworkers will be impacted
- Do not offer assistance until you are sure you will be able to fulfill it (or will not need it yourself)

Colorado Springs Area Known Collections Affected

- Ute Pass Historical Society (Woodland Park)
 - Woodland Park was affected by both Springer and Waldo Canyon Fires - Evacuations
 - Some materials were relocated
- Flying W Ranch (Colorado Springs)
 - Within the burn area, buildings destroyed
 - Per reports (unconfirmed), they spent the days prior to 6/26 removing objects and materials

Looking Forward

- What would be helpful
 - For institutions
 - For emergency services
- Planning for Response and Recovery

My Thoughts

- Understanding emergency operations
- Identifying available resources
- Creating networks

My Suggestions

- Understanding emergency operations
 - local jurisdictions
(city/county/state/federal/military)
 - Creating ‘Reference Sheets for the Layman’
(cheat sheets for persons who find themselves monitoring incidents)
 - Emergency Service Functions
 - Incident Management Team levels
 - Emergency Operation Centers
 - Transition information

My Suggestions

- Identifying available resources
 - Directory of persons with professional expertise and emergency response skills
 - Example: Fire line qualified
 - Will be listed with accrediting agencies but not cross-referenced with professional areas (archaeologist, conservator, etc.)

My Suggestions

- Create networks
 - Identify the facilities and services that institutions can provide for others
 - Need for ‘safe havens’
 - Travel/distance/conditions considerations
 - Publicize so institutions can build into their own plans

Coordinating with Lead Agency

- Contacting the Lead Agency for ESF11
 - OUTSIDE the fire season to learn their
 - communications methods
 - needs
- Points of contact
 - Part of the network information available to Emergency Management personnel
 - Regional
 - Expertise

Questions?

Mary Rupp

Archives Librarian and Digital Repository Coordinator

University of Colorado Colorado Springs

mrupp@uccs.edu